



SETUP:

General Setup

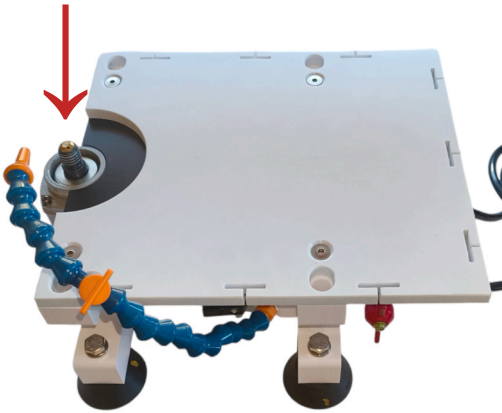
Work Area Irrigation

Saw Attachment Assembly

Multi-Lap Modular Grinder

*Updated Dec. 2024

*Threaded Arbor



← This is the base unit.

Drums can be screwed directly onto the threaded arbor.

Pads require either a Stiff or Flexible Velcro Backer to be attached to the threaded arbor. Once this is attached, pads can be placed velcro-side down onto the backer.

Cones require the brass nut to be placed on the threaded arbor, then the cone can be screwed onto the arbor. This allows the cone

Work Area Irrigation

Our go-to for a container are dog pans (47"x29", available on Amazon) as a cheap but effective solution. If you cut a 1/2" hole in the corner, you can screw in a barbed hose plug to attach a drain hose. You can drain into a bucket with a sump pump or sink.



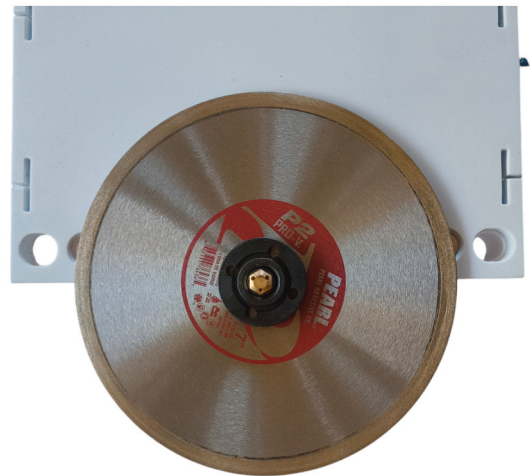
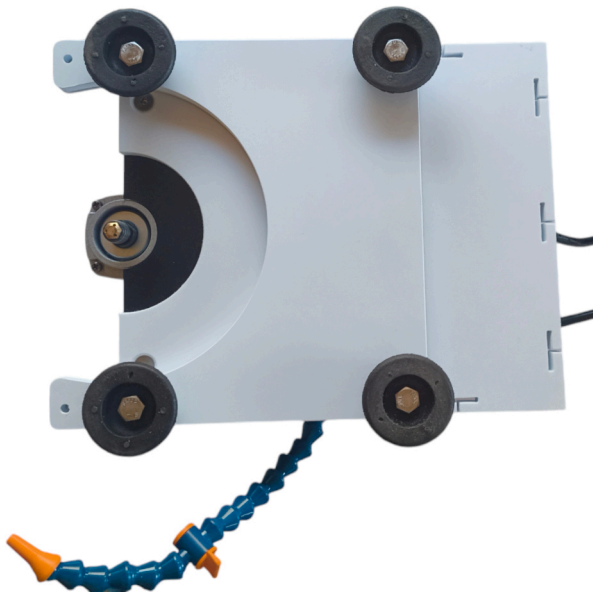
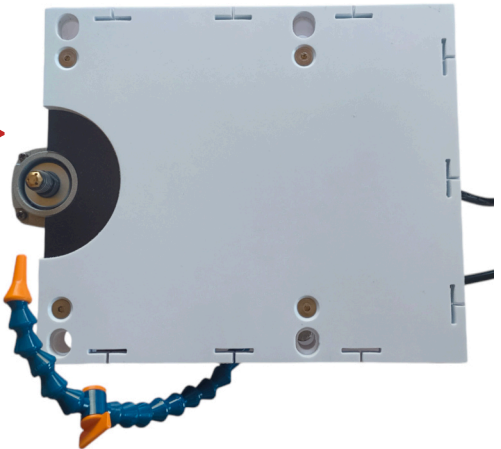
Our preferred water pump:

Little Giant 500203, 1-A 115 Volt, 1/200 HP, 170 GPH Small Submersible Permanently Oiled Pump for Fountain, Water Displays and Air Conditioners

Saw Attachment Assembly

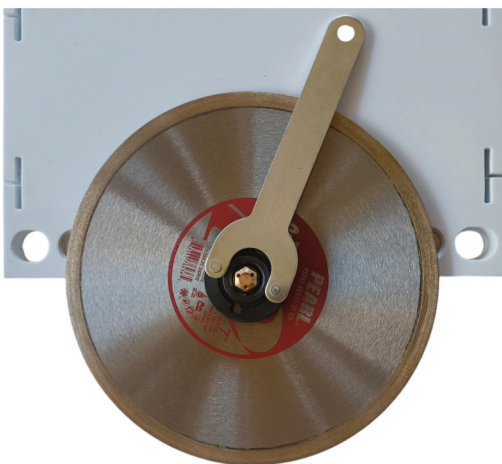
**Tools for Saw Attachment assembly are included with all Saw Attachment orders.*

Base Unit

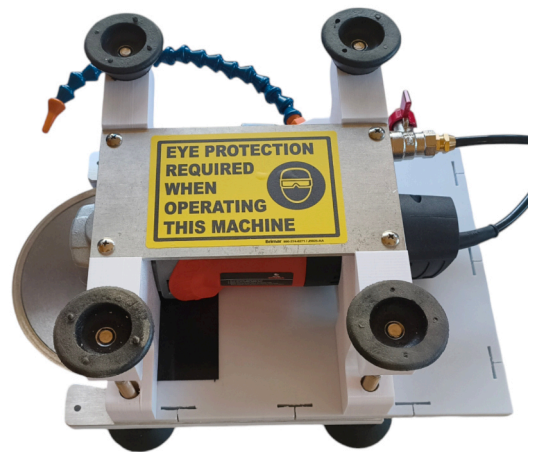


1 The Saw attachment is placed on top of Base unit. **Make sure power is turned OFF.**

2 Place saw blade on the threaded arbor. Place blade nut on top of the saw blade.



3 Align wrench with holes on the blade nut and tighten.



4 Flip machine over. It is now ready to cut.