



## **SETUP:**

***General Setup***

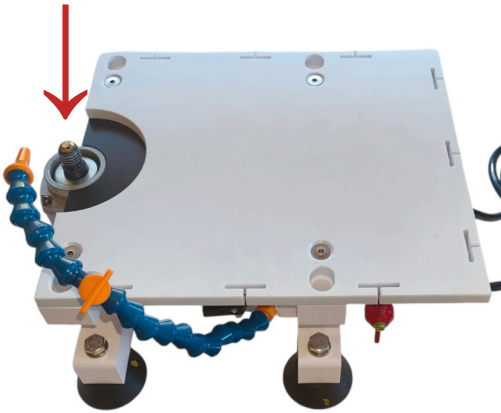
***Work Area Irrigation***

***Saw Attachment Assembly***

# Multi-Lap Modular Grinder

\*Updated Feb. 2025

\*Threaded Arbor



← **This is the base unit.**

**Drums** can be screwed directly onto the threaded arbor.

**Pads** require either a Stiff or Flexible Velcro Backer to be attached to the threaded arbor. Once this is attached, pads can be placed velcro-side down onto the backer.

**Cones** require the brass nut (included with tools) to be placed on the threaded arbor, then the cone can be screwed onto the arbor. This allows the cone to be flush with the top of the machine.

## Work Area Irrigation

Our go-to for a container are dog pans (47"x29", available on Amazon) as a cheap but effective solution. If you cut a 1/2" hole in the corner, you can screw in a barbed hose plug to attach a drain hose. You can drain into a bucket with a sump pump or sink.



**Our preferred water pump:**

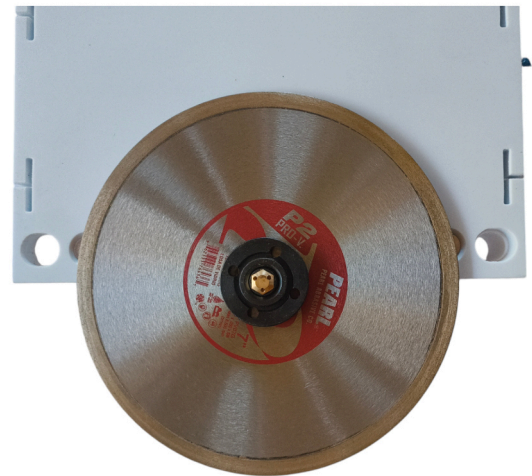
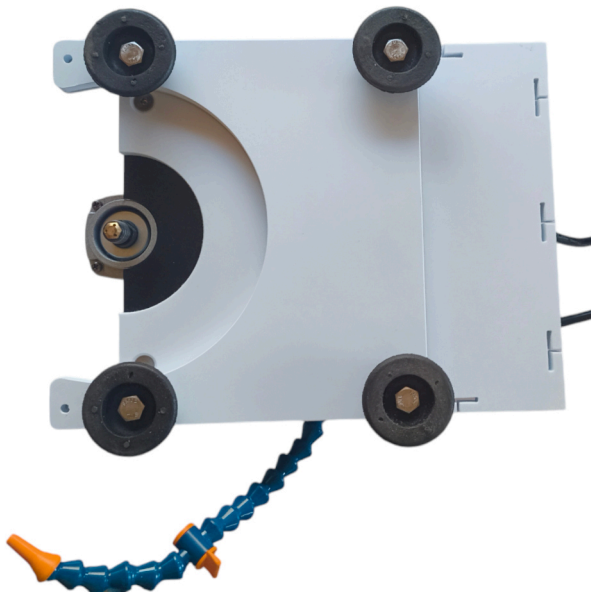
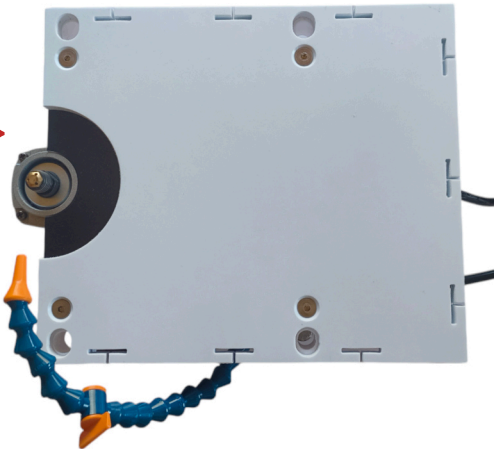
Little Giant 500203, 1-A 115 Volt, 1/200 HP, 170 GPH Small Submersible Permanently Oiled Pump for Fountain, Water Displays and Air Conditioners

# Saw Attachment Assembly

*\*Tools for Saw Attachment assembly are included with all Saw Attachment orders.*

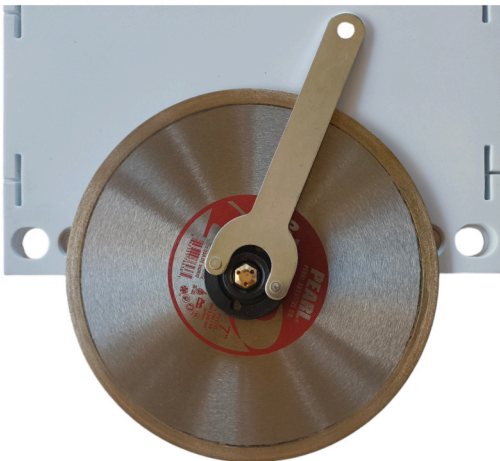
**\* Make sure power is turned OFF before assembly!**

Base Unit



**1** The Saw attachment is placed on top of Base unit. Place stainless steel spacer onto the threaded arbor.

**2** Place saw blade on top of the spacer. Place lock nut on top of blade.



**3** Align wrench with holes on the lock nut and tighten.



**4** Flip machine over. It is now ready to cut.